

Built Tough to Resist the Elements



- Camera
- Microphone
- Ringer Button
- Speakerphone
- Water Drain Hole



A Rugged Metal Body Withstands the Elements

Potential intruders will have a tough time tampering with this rugged metal body. For additional security, we used special screws that are extremely difficult to remove. Choose either gold or silver. With its solid appearance, the outside unit makes a good match with both traditional and contemporary homes. And the body features a water resistant structure, so you can install it anywhere outdoors.



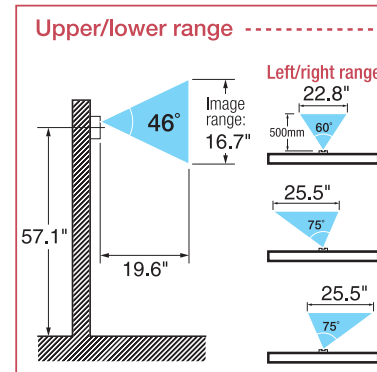
Illuminated Button Lights up at Night

The door camera illuminates at night, making it easier for guests to find while also lending an attractive look to your doorway. When a visitor presses the button, a chime tone sounds at the indoor color monitor unit.



Camera Angle Control Adjusts to Doorway Shape

You get a clear view of visitors at your door thanks to a camera that views over a range of 16.7" up and down and 25.5" side to side. The camera's side-to-side aim range can be adjusted to fit installation conditions.



MONITOR FEATURE LIST AND SPECIFICATIONS

Model Number	VL-GM301A Premium Monitor	VL-GM201A Monitor
Design		
System Configurations	3 monitors, 2 cameras	1 monitor, 1 camera
Monitor	3.5"	2.5"
Communication	Hands-free or Press-to-talk	
Answer by Voice	No	Yes
Ringer Tone	Yes (5)	No
Ringer Volume	3 steps (1-3)	
Receiver Volume	3 steps	No
Intercom (Monitor to Monitor)	Yes	No
Camera Capability	2	1
Camera On/Off	Yes	
Voice Call	Yes	Yes
Door Strike	Yes (2 circuits)	Yes (1 circuit)
Video Out	Yes	No
Alarm Out Put	Yes	No
PBX Connect	Yes (2 circuits)	Yes (1 circuit)
Indication Time of Video Monitor		
-Outside Call (Calling)	Approx. 30 seconds	
-Monitoring	1 minute	
-Outside Call (Talking)	1 minute 30 seconds	
-Outside Call (Press to Talk)	1 minute	
Brightness	5 steps	
Installation	Flush Mount/Surface Mount	Surface Mount/Desk Mount
Dimensions	6.4W x 1.25D x 5.5H	5.3W x 1.25D x 5.5H
Material	ABS	
Power Consumption	Stand-by 44mV, Operation 450mV (DC24V)	Stand-by 30mA, Operation 420mA (DC24V)
Operating Environment	32°F to 104°F	
Length of Cable		
Monitor Power Supply	98ft (Fire Alarm Cable)	
Main Monitor to Camera	328ft (CAT3 Cable)	
Monitor to Monitor	-	

DOOR CAMERA FEATURE LIST AND SPECIFICATIONS

Model Number	VL-GC001A-N	VL-GC001A-S	VL-GC002A-W	*VL-GC003A
Features				
Color	Gold	Silver	White	-
Material	Aluminum		Plastic	
View Area			-	
- Horizon 50cm from Camera	22.83" (60") @ 19.5" from Camera		45" (98") @ 19.5" from Camera	
- Vertical 50cm from Camera	16" (60") @ 19.5" from Camera		31" (77") @ 19.5" from Camera	
Angle Adjustment	Left & Right		Left & Right & Up	
Operating Environment	14° F ~ 122° F			
Power Supply	From Monitor			
Lighted Key	Blue		Green	Blue
Camera Device	CCD 250k pixels			
Minimum Brightness	Approx. Lux/19.68" from Camera			
Infrared Camera	Yes			
Splash Resistant	Yes			
Dimensions (W x D x H)	3.54" x 1.3" x 6.49"		3.85" x 1.69" x 5.11"	4.5" x 2.0" x 6.34"
Weight	.73 lbs.		.66 lbs.	.68 lbs.
Mounting	Standard		Surface	Recessed

* Requires optional face plate VL-GF001A-S, VL-GF001A-F, VL-GF001A-N

Panasonic ideas for life

Panasonic Consumer Electronics Company
Division of Matsushita Electric Corporation of America
Executive Offices: One Panasonic Way, Secaucus, NJ 07094
(201) 348-7000 • www.panasonic.com

Panasonic Customer Service
9 am - 9 pm (EST) Monday - Friday
10 am - 7 pm (EST) Saturday & Sunday
1-800-211-Panasonic • consumerproducts@panasonic.com

Design and specifications subject to change without notice.

CSD0602325S

VL-GM301A / VL-GM201A

Video Door Intercom Systems



Panasonic ideas for life

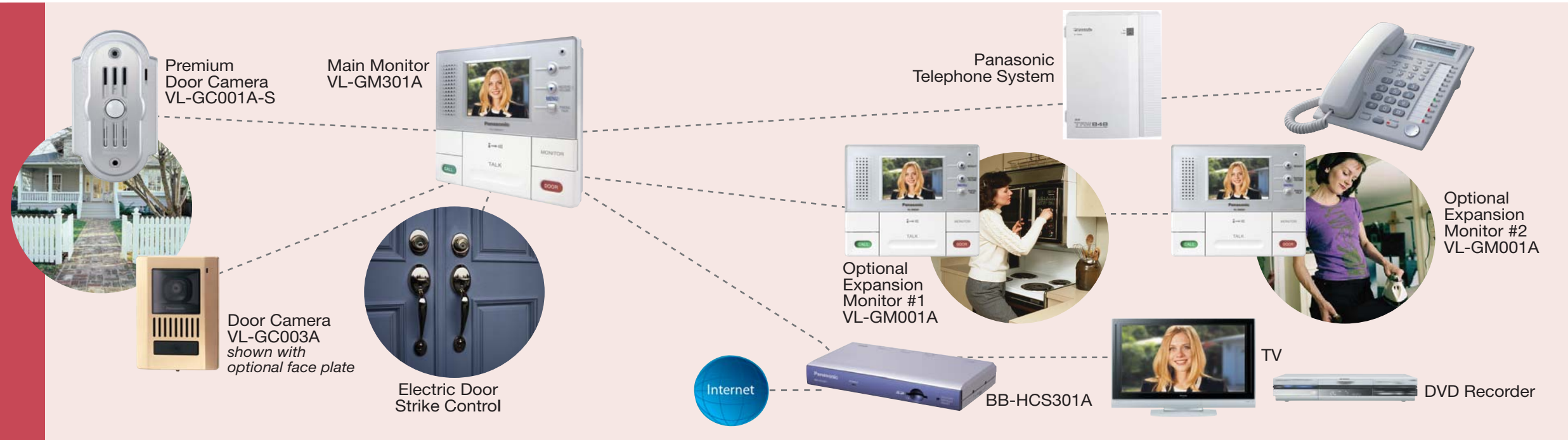
Seeing is Relieving A convenient way to protect your home and family



your home and family

Panasonic introduces an innovative new system for protecting your home from intruders. Combining video and intercom functions, this system lets you see and speak with visitors before opening the door. You can also integrate the PBX telephone system to the video door intercom system for added reliability and convenience. The indoor color monitor offers a host of functions that make it easy for you and family members to see who's outside. With advanced new video intercom systems from Panasonic, protecting loved ones has never been easier.

See & Talk to Visitors Before Opening the Door



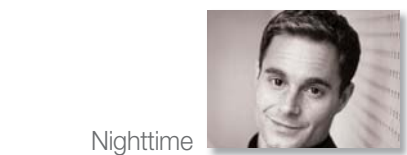
Color LCD Monitor

It's easy to see who's at the door, thanks to a color LCD with automatic brightness compensation and adjustable contrast. In dim evening light the image displayed is brighter than the actual light level. At night an infrared LED in the camera unit lets you see your visitor's face from approximately 19 inches (50 cm) away.*

*At night, images are black and white.



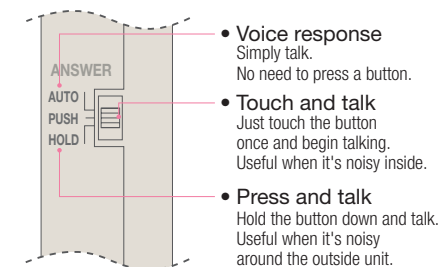
Daytime



Nighttime

Hands-free Operation

When you're holding something you can't put down right away, this function lets you answer without having to press a button. Just use the switch on the monitor station unit to select any one of the three response methods outlined below.



Panasonic Phone System Integration



KX-TA308, KX-TA624, KX-TA824, KX-TA1232, KX-TAW848 Ver2.0-, KX-TD308, KX-TD816, KX-TD1232, KX-TDA50 Ver2.0-, KX-TDA100 Ver2.01-, KX-TDA200 Ver2.01-, KX-TDA600

Monitor

To view and listen from the monitor, simply press the monitor button. Indoor sounds cannot be heard from outdoors. This function works when the system is in normal standby condition.



Door Strike Connection

You can open an electronic door lock from the monitor station. There's no need to go all the way to the door each time a guest arrives - especially convenient when you're hosting a party.



VL-GM201A Video Door Intercom Monitor

- Supports one monitor, one camera and one door opener connection
- Compatible with VL-GC003A, VL-GC002A-W, VL-GC001A-S and VL-GC001A-N door cameras only
- Supports one connection to most Panasonic telephone system models
- 2.5" color LCD display
- Hands-free or Press to Talk operation
- 5-step brightness control
- Wall or desk mountable

VL-GM301A Premium Video Door Intercom Main Monitor

- Supports three monitors (one main monitor and two expansion monitors VL-GM001A), two cameras and two door opener connections
- Compatible with VL-GC003A, VL-GC002A-W, VL-GC001A-S and VL-GC001A-N door cameras only
- Supports two connections to most Panasonic telephone system models
- 3.5" color LCD display
- 3-step ringer control
- Hands-free or Press to Talk operation
- 5-step brightness control
- Video Out Jack
- Wall Mountable (surface or recessed)



Expandable Line Up

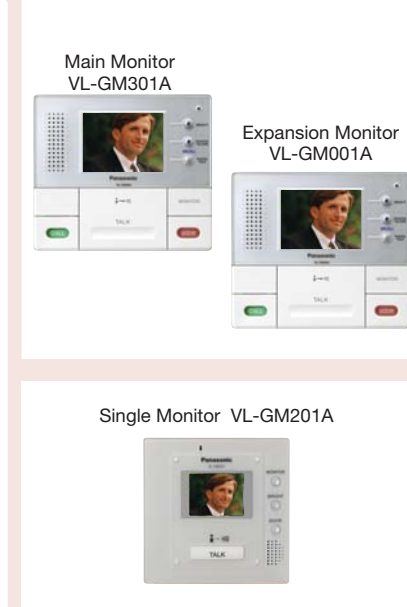
Recessed Mountable Door Camera



Door Camera



Monitors



Mounting Options

