

Panasonic

ideas for life

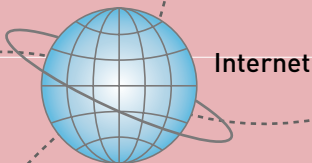
Home Network Camera
[Wired Type] **BL-C1**
[Wireless Type] **BL-C20**
Indoor Use Only

See There

When You Can't Be There™

Aren't you sometimes concerned about your home while you're away? Are the pets safe? Is everything turned off? The built-in Web server in Panasonic's Network Camera lets you connect directly to a network*1 and see what's going on from a PC or cell phone browser*2. You can even operate the camera by remote control. Check the entrance, living room, or any other part of the house, right from your office or holiday destination. The BL-C1 and BL-C20 are also reasonably priced, because they include only the most important functions.

*1: Internet, LAN, home network, etc.
*2: Still images only.



BL-C1



BL-C20

Panasonic Lessens Your Home Worries



Make sure your pet is happy. 10x Digital Zoom Function*

It's so reassuring to see your pet's happy face while you are out. A simple mouse operation is all you need to enlarge the image, using the 10x digital zoom, so you get a clear view of your pet's expression.

* This feature is not available when viewing on a cell phone.

Simple Installation, Setup, and Camera Access

Plug & Play, Simple Ethernet Connection

The auto setup and UPnP functions simplify setup by automatically making the necessary network connection settings for you. The BL-C1 and BL-C20 also support the DDNS service* for fixed domains, so you don't need to make any fixed address settings to monitor your camera over the Internet. See www.viewnetcam.com for details.

Viewnetcam.com

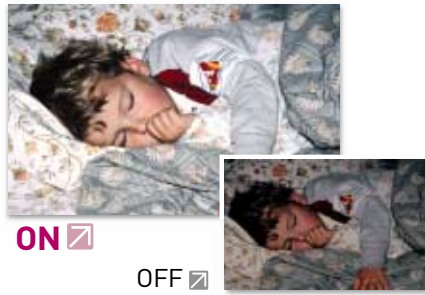
* The services of other companies are also supported, but correct operation cannot be guaranteed.

Recording Program* Included

You can record the moving images captured by the camera on your PC. This lets you enjoy natural motion that isn't possible with still pictures. For example, you can check on your pet's activities while you're out.

• See the PC screen on the front page of this brochure for browser information.

* Recording is possible for only one camera. To record the images of multiple cameras, use the separately sold BB-HNP11.



Watch over your sleeping children. Colour Night View Mode*1

It's easy to check on sleeping children even while doing housework and chores. The camera's brightness setting is automatically adjusted when the room light is dimmed, so you can see clearly even with the light produced by the auxiliary lamp*2 for a fluorescent light. This lets you check on things without waking the kids up.

*1 The image tends to blur more than that in standard mode when viewing a moving subject in low light or when using the pan or tilt function. When viewing a dark subject in colour night view mode, spots of white or coloured light may appear in the image.

*2 Minimum brightness is 4 lux.

View a whole series of images.

Buffered Images

Up to 250* images can be stored in the camera's internal memory. You can save images taken with the timer setting or motion detection sensor, and view them all at once.

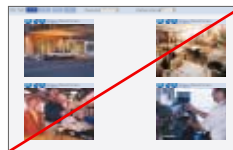


Viewer Browser

* At 320 x 240 resolution and standard quality.

Multi-Camera Capability

Check the images from three sets of four cameras each. Additionally, you can display the images of up to 12 cameras on a page as a still picture.



Be informed whenever something moves.

Motion Detection & Image Transfer Mode

In this mode, the camera captures an image only when motion is detected. The image can be stored temporarily in the camera*1, or sent to you by e-mail*2 or FTP data transfer.*3

This is convenient for checking suspicious activities at home, or, for example, when you want to know when family members come home or your pet starts eating dinner.



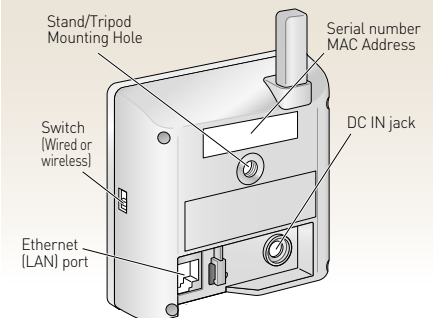
*1 For details, see the Buffered Images function.

*2 When the e-mail function is used to transfer images or messages, e-mail transmission may not be possible in some cases due to the mail server authentication system (SMTP authentication, etc.) used by your Internet service provider.

*3 The sensor's detection history can also be e-mailed to you once each day at a preset time.

Part Names [Rear View]

BL-C20



Specifications [BL-C1/C20]

Server		Camera		General	
Video Compression	JPEG (3 Levels)	Zoom	10 x digital zoom	Indicator Display	Power/Network Communication/Camera operation/Ethernet link
Video Streaming Format	Motion JPEG	Image Sensor	1/4-inch CMOS Sensor 320,000 pixels	Dimension (HWD)	BL-C1: About 85 mm (3 3/8 inches) x About 85 mm (3 3/8 inches) x About 25 mm (1 inch) BL-C20: About 85 mm (3 3/8 inches) x About 85 mm (3 3/8 inches) x About 35.5 mm (1 3/8 inches)
Video Resolution	640 x 480, 320 x 240 (default), 160 x 120	Illuminance	4—10,000 lx (when color night view mode is enabled) 10—10,000 lx (when color night view mode is disabled)	Weight	BL-C1: 100 g (0.22 lb.) (Only the unit) BL-C20: 140 g (0.31 lb.) (Only the unit)
Frame rate *2	Max. 7.5 frames/second (640 x 480) Max. 15 frames/second (320 x 240 or 160 x 120)	White Balance	Auto/Manual	Power Supply	AC adaptor: 9 VDC (120 V AC) Consumption: [For BL-C1] About 1.7 W [For BL-C20] About 4.6 W
Authentication	ID/Password Administrator/General User (Up to 50)	Focus	Fixed 0.3 m (11 13/16 inches)—Infinity	Operation Temperature	+5°C — +40°C (+41°F — +104°F)
Supported Protocols	TCP, UDP, IP, HTTP, FTP, SMTP, DHCP, DNS, ARP, ICMP, POP3, NTP, UPnP™	Caliber Ratio (F No.)	F2.8	Operation Humidity	20 %—80 % (No Condensation)
Max User Access	20	Viewing Angle	Horizontal axis: 53 °, Vertical axis: 41 °		
Image Transfer	E-mail, FTP	Exposure	Auto		
Message Transfer Condition	Timer or Motion Detection				
Wireless [For BL-C20]		Terminal			
Wireless Network	IEEE802.11b/g	Interface	10Base-T/100Base-TX Ethernet RJ-45 connector x 1		
Frequency Range	2.412—2.462 GHz	System Requirements For Viewer PC			
Channel	1—11	Operation System	Windows® 98SE, 2000, Me, XP		
Security	WEP (64/128/152 bit), SSID	Web Browser	Internet Explorer® 6.0 or later		

*1 The maximum number of frames changes depending on the image quality and what object you buffer. *2 Frame rate may slow down depending on the network environment, PC performance, image quality or what object you view.

*3 POP before SMTP authentication and SMTP authentication (PLAIN and LOGIN) are supported. SMTP authentication (CRAM-MD5) is not supported.

Panasonic

<http://panasonic.co.jp/pcc/products/en/netwcam/>

0M1005SP-C1/C20-LT.CE
Design and specifications are subject to change without notice.